



UTAH AGRC
Automated Geographic Reference Center



1. Introducing the latest SGID delivery system
2. New available imagery

*Greg Bunce AGRC
gbunce@utah.gov*

CD-ROM

Utah State Geographic Information Database (SGID)

COMPACT
disc
DATA STORAGE



GIS by ESRI

*This CD-ROM product contains a suite of UNIX
ARC/INFO AMLs, a UNIX ArcView 2.1 project,
ArcView Data Publisher software for use with
MS-DOS Windows, and an associated project
to be used with this software. All data is
ISO 9660 compliant and can be used in either
the UNIX or PC environments.*



MADE IN USA
P/N 65281



Published by: Information
Technology Services
Automated Geographic Reference
Center in collaboration
with Utah State University



Utah State
UNIVERSITY

*Comments, suggestions, evaluation and other inquiries should be addressed to: David Vaughn,
Automated Geographic Reference Center, 6130 State Office Building, Salt Lake City, Utah 84114, (801) 838-3165,
Email dave@dpagr3.it.as.utah.edu or Doug W. Wight, Department of Geography and Earth Resources,
Utah State University, Logan, Utah 84322-5240, Tele. (801) 797-0538, Email dougw@nr.usu.edu*

*For UNIX Users:
This CD should be mounted on your system. Follow appropriate mounting
procedures for your system. Please refer to Mounting Instructions. To
run the AGRC ARC/INFO Menu System, setenv AGHOME/cdrom/data.*

*See your system administrator for details. Enter Arc and at the
ARC prompt, & SAGHOMEstart, to use the UNIX ArcView 2.1 project.
Start ArcView and open the project SAGHOME/utahux.apr.
ISO 9660 level 2 compliance*

*Contractor/Manufacturer is
Environmental Systems Research Institute, Inc.
380 New York Street, Redlands, CA 92373 USA
1-800-GIS-XPRT • (909) 793-2853
FAX (909) 793-3953*



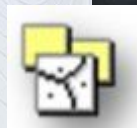
UTAH AGRC
Automated Geographic Reference Center

SGID 1990s

ArcView GIS 3.x (1995)



ESRI Coverage Files

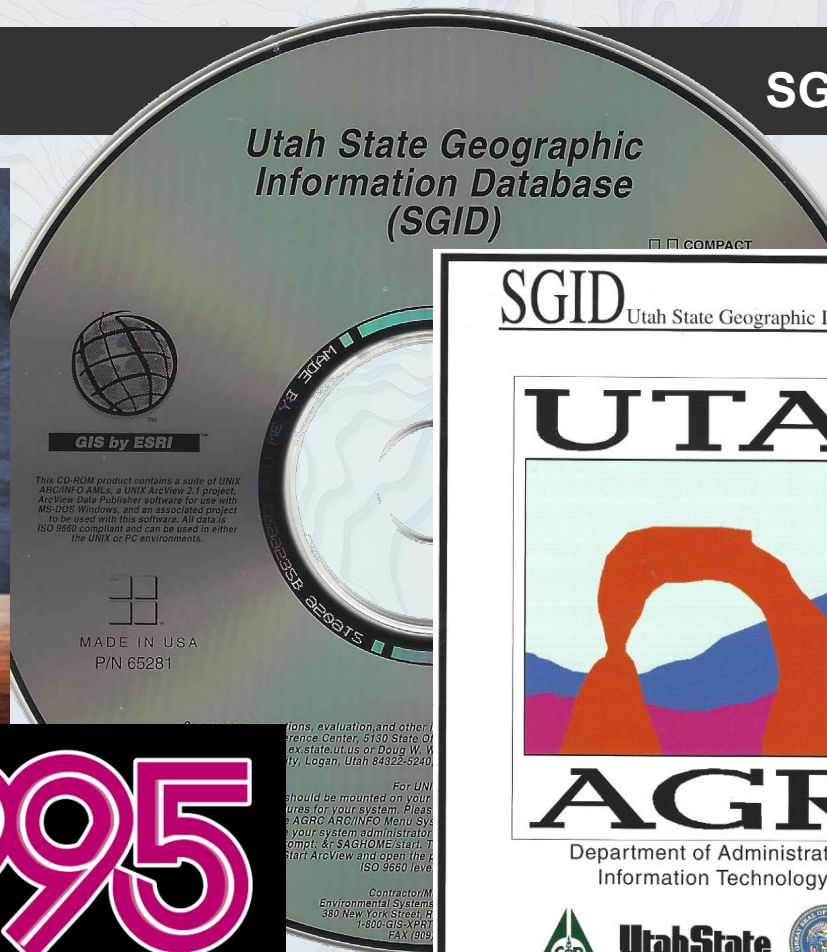


AGRC Homepage (1994)



1996

1995



SGID Utah State Geographic Information Database

UTAH

AGRC

Department of Administrative Services
Information Technology Services

ions, evaluation and other
rence Center, 6130 State Of
ex.state.ut.us or Doug W. W
ty, Logan, Utah 84322-5240.

For UN
should be mounted on your
ures for your system. Pleas
AGRC ARC/INFO Menu Sys
your system administrator
ompt. & SAGHOMEstart. T
Start ArcView and open the
ISO 9660 level.

Contractor/M
Environmental Systems
380 New York Street St
1-800-GIS-XPRT
FAX 809

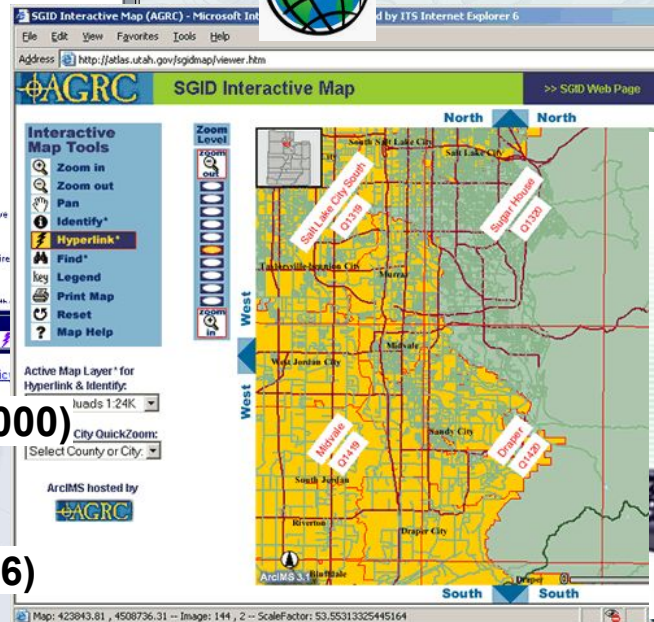
ArcGIS 8.x
(1999/2000)



2005



2007



ArcIMS (2000)

File Geodatabase (2004)



ArcSDE integrated into 9.2 (2006)



PostGIS (2001)

Quantum GIS (2002)



First releases:

2013 - Quantum GIS renamed to QGIS

2013 - ArcGIS Online

2015 - ArcGIS Pro



Cloud DBs and Computing

Web Services

AGRC Basemaps

Web GIS

Open Source - mainstream

AGRC API



AGRC Imagery



Most Popular Datasets

Addresses



Aerial Photos



Base Maps and Imagery



USGS Topo Maps



Boundaries



Parcels



Land Ownership



Transportation



SGID Index

Show Filters

Simple Filter (matches text in individual columns with list.js)

category	name	agency	description	service
basemap	Address Points	AGRC	A muted basemap great for overlaying data.	
location	Address Points	AGRC	Address points	

Data Downloads



Google Drive

FTP

Database access

(~2006 to ~2015)



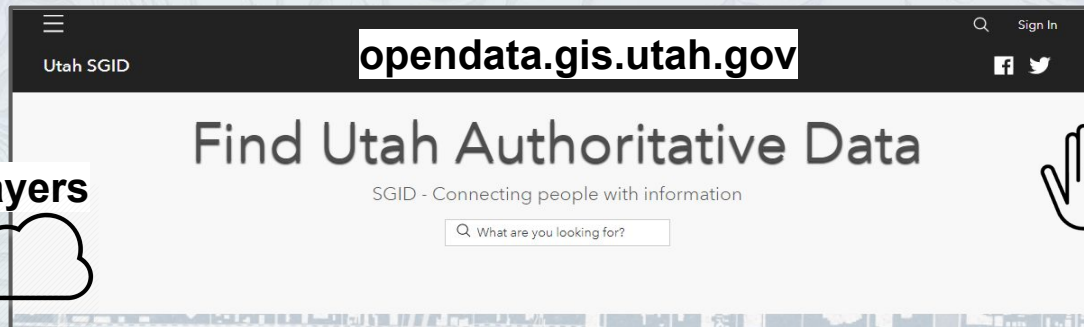
'near-live' data

yesterday's news

dynamic map layers



gis.utah.gov



opendata.gis.utah.gov

Find Utah Authoritative Data

SGID - Connecting people with information

What are you looking for?



MUNICIPAL BOUNDARIES



Boundaries.Municipalities is a multi-purpose statewide dataset of municipal boundaries for cartogr

Bound:
by the l

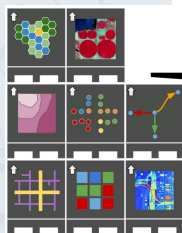
Downloads and Web Services



Utah Municipal Boundaries: SGID Open Data Downloads and APIs

Utah Municipal Boundaries: File Geodatabase

Utah Municipal Boundaries: Shapefile



python



Explore the SGID through data categories



gis.utah.gov/sgid-product-relaunch-update



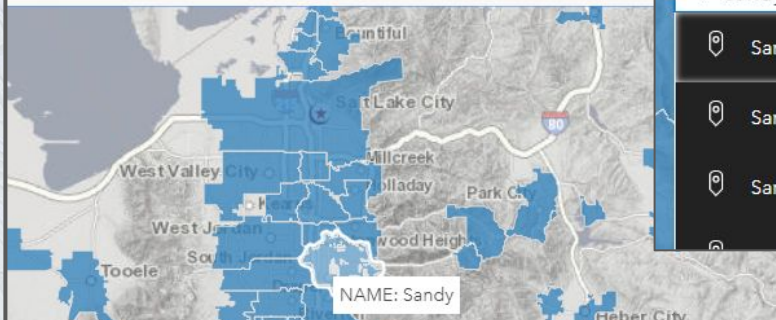
opendata.gis.utah.gov



Utah SGID

Utah Municipal Boundaries

Last updated 12 hours ago | 253 Records



Search results for 'sandy':

- Sandy, UT, USA
- Sandy Hills, UT, USA
- Sandy City, UT, USA



NAME: Sandy

Download | APIs

Full Dataset

GeoService

<https://services1.arcgis.com/99lidP>

GeoJSON

<https://opendata.arcgis.com/dataset>

Download | APIs

Full Dataset

Spreadsheet

KML

Shapefile

File Geodatabase

Filtered Dataset

Spreadsheet

KML

Shapefile

Overview | Data | API Explorer

2/10/2020 | Feature Layer | Custom License

Showing 1 to 10 of 37

OBJECTID	COUNTYNBR	NAME	COUNTYSEAT	SHORTDESC
5	23	Grantsville	0	GRANTSVILLE
6	18	Bluffdale	0	BLUFFDALE (SL CO)
8	18	Herriman	0	HERRIMAN TOWN

2/11/2020

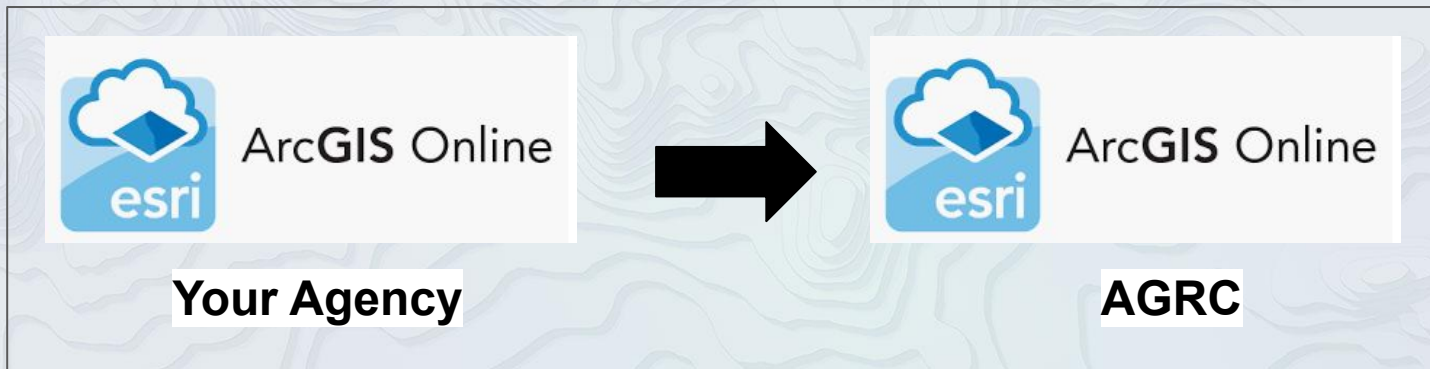
These data w documents a



be careful
of full extent



Sharing: Integrating Authoritative Data into the SGID



Do you have authoritative ArcGIS Online data to share to the SGID Open Data website?



gis.utah.gov/gis-data-sharing/open-data



The Takeaway





OpenSGID

PostGIS



Google Cloud Platform

PostgreSQL

agrc@opensgid@opensgid.agrc.utah.gov.sde

- opensgid.bioscience.dominant_vegetation
- opensgid.bioscience.fire_perimeters
- opensgid.bioscience.wildfire_perimeters
- opensgid.boundaries.association_of_governments
- opensgid.boundaries.blm_districts
- opensgid.boundaries.blm_monuments_and_ncas
- opensgid.bound...
- opensgid.bound...
- opensgid.bound...
- opensgid.bound...
- opensgid.bound...
- opensgid.bound...
- opensgid.bound...
- opensgid.bound...
- opensgid.bound...
- opensgid.bound...
- opensgid.bound...
- opensgid.bound...
- opensgid.bound...

PGAdmin File Object Tools Help

Dashboard Properties SQL Statistics Dependencies Dependents opensgid/agrc

opensgid/agrc@opensgid.agrc.utah.gov

Query Editor Query History

```

1 -- Get the extent (the bounding box) of a geometry by layer name.
2 SELECT
3   ST_Extent(shape) AS extent
4 FROM
5   cadastre.beaver_county_parcel;SELECT xid, fips, parcel_id, parcel
6   FROM cadastre.davis_county_parcel;
```

Dynamic map layers

Data Exploration

Drawing Speed

SQL Queries

Beta testing ends February 21, 2020

NEWSLETTER





UTAH AGRC
Automated Geographic Reference Center

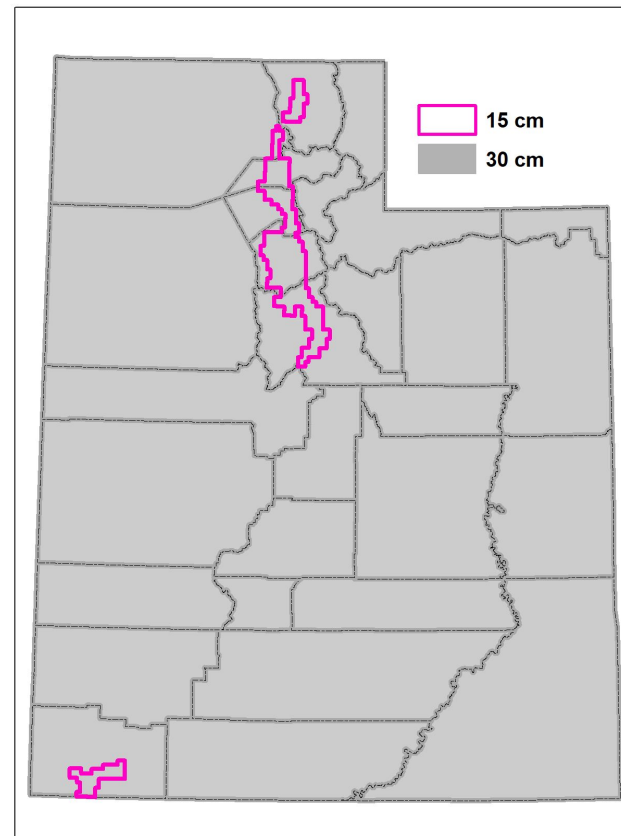
New AGRC Imagery

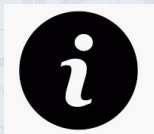


New Discover Imagery Services

- **'Hexagon 30cm'** (~12in) statewide imagery (2018)
- **'Hexagon 15cm'** (~6in) Wasatch Front & WashCo area (Nov 2019)
- **'Utah'** service will be changed to use the new Hexagon Imagery

!!! 15 cm statewide imagery is planned for 2021 !!!





Clear your cache, clear your cache, clear your cache! (web browser, ArcGIS Pro, ArcMap, etc.)



Flight dates will be available soon

The downloads are not available at this time

Google services will remain available

If you encounter issues, please send us the X&Y coordinates (and what you're seeing) to agrc@utah.gov

For more information check out the Discover pages on our website and also watch for a blog post



Subscribe to our mailing list at gis.utah.gov

Email Address *

* indicates required

First Name *

Last Name *

Please select updates that interest you

- Data Updates
- Info for Developers
- General Utah Map News
- Local & State Government

Subscribe

Let's Connect



web: gis.utah.gov

twitter: [@MapUtah](https://twitter.com/MapUtah)

email: agrc@utah.gov